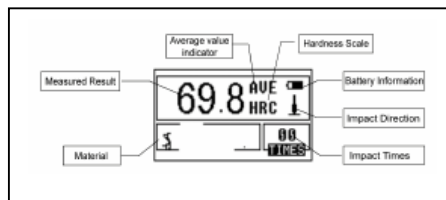


Hardness Tester TH140



- Developed Model of HLN-11A
- Automatic identification of Impact devices
- On-Board memory holds 48-350 groups of data
- Software to connect with PC
- Upper and lower limit and sound alarm
- Large LCD with backlight, showing all functions and parameters
- Press HELP key can obtain operating tips in any displaying interface
- Direct display of hardness scales HRB, HRC, HV, HB, HS,HL
- Conversion to tensile strength (U.T.S)
- For all metallic materials
- Test at any angle, even upside down
- Removable printer included
- Wide measuring range (see next page)
- Six Impact Devices are available for special application
- Battery low indication and sound alarm



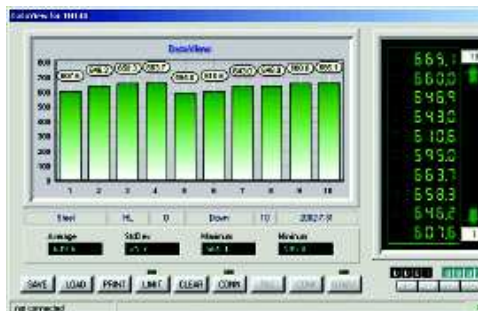
Technical specifications

Hardness scale	HL, HRC, HRB, HRA, HV, HB, HS
Memory	48-350 group (Impact times:32-1)
Measuring range	See next page
Tensile strength U.T.S. range	374~2652 MPa
Accuracy	±6HLD (760±30HLD) error of displayed value 6HLD (760±30HLD) repeatability of displayed value
Standard Impact Device	D
Optional Impact Devices	DC/D+15/G/C/DL (see page 8)
Max. Workpiece Hardness	996HV(For Impact Devices D/DC/DL/D+15/C) 646HB(For Impact Device G)
Min. Radius of Workpiece (convex/concave)	Rmin = 50mm (with special support ring Rmin= 10mm)
Min. Workpiece weight	2~5kg on stable support 0.05~2kg with compact coupling
Min. Workpiece thickness	5mm (Impact Devices D/DC/DL/D+15) 1mm (Impact Device C) 10mm (Impact Device G)
Min. thickness of hardened layers	0.8mm
Power	Rechargeable NiMH Battery, 5×1.2V 600mAh
Continuous Working time	About 50h, (without printing and backlight)
Charging time	2~3.5 hours
Operating temperature	0~40°C
Relative humidity	±90%
Overall dimensions	268×86×50mm
Weight	530 g (including Impact Device and printer)

Hardness Tester TH140

Measuring range

Material	Hardness Scale	D/DC LD: 170-900	D+15 LD+15: 330-900	C LC: 350-960	DL LDL: 560-950	G LG: 200-750
Steel &	HRC	20-68.4	19.3-67.9	20-69.5	20.6-68.2	
cast steel	HRB	59.6-99.5			37-99.9	47.7-99.9
	HRA	59.1-858.8				
	HB	127-651	80-638	80-683	81-646	90-646
	HV	81-955	80-937	80-996	80-950	
	HS	32.5-99.5	33.3-99.3	31.8-102.1	30.6-96.8	
	HRB	46.5-101.7				
Stainless	HB	85-655				
	HV	85-802				
	HRC	20.4-67.1	19.8-68.2	20.7-68.2		
CWT/St	HV	80-898	80-935	100-941		
	HRC					
GC.Iron	HB	93-334				92-326
	HV					
	HRC					
NC.Iron	HB	131-387				127-364
	HV					
	HRC					
C.Alum	HB	19-164		23-210		32-168
	HRB	23.8-84.6		22.7-85.0		23.8-85.5
Brass	HB	40-173				
	HRB	13.5-95.3				
Bronze	HB	60-290				
Copper	HB	45-315				



Dataview for TH140



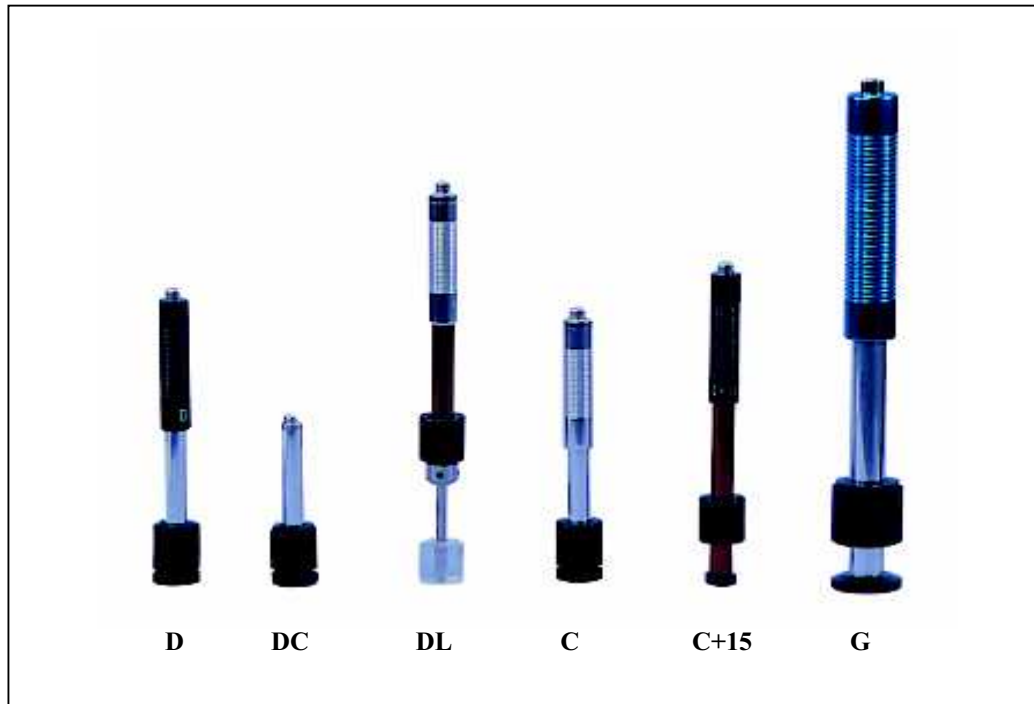
Standard delivery

- Main unit with removable printer 1
- Impact Device type D 1
- Test block with HLD value 1
- Charger 1
- Cleaning brush 1
- Table support for main unit 1
- TIME certificate 1
- Instruction manual 1
- Warranty card 1
- Carrying case 1

Optional accessories

- Printing paper
- Special Impact Devices
- Support rings
- Dataview and cable

Optional Impact Devices

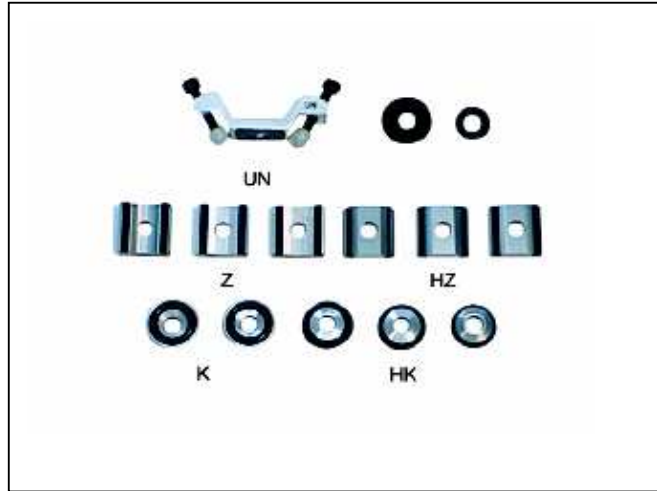


Optional Impact Devices

Technical specifications

Application range of Impact Devices	D type for general pieces DC type for hole or cylinder DL type for long and narrow channel or hole	D+15 type for measuring in grooves or recessed surfaces	C type for measuring light and small piece and surface hardened layer	G type for measuring heavy and rough cast and forged pieces	
Impact Device	D/DC/DL	D+15	C	G	
Impacting energy	11mj	11mJ	2.7mJ	90mJ	
Mass of impact body	5.5g/5.5g/7..3g	7.8g	3.0g	20g	
Hardness of spherical test tip	1600HV	1600HV	1600HV	1600HV	
Diameter of spherical test tip	3mm	3mm	3mm	5mm	
Material of spherical test tip	Tungsten carbide	Tungsten carbide	Tungsten carbide	Tungsten carbide	
Diameter of Impact Device	20mm	20mm	20mm	30mm	
Length of Impact Device	147/86/75mm	162mm	141mm	254mm	
Weight of Impact Device	50g	80g	75g	250g	
Max. hardness of workpiece	940/940/950HV	940HV	1000HV	650HB	
Average surface roughness of the test piece	Ra: 1.6 μ m	Ra: 1.6μm	Ra: 0.4μm	Ra: 6.3μm	
Min. weight of test piece	Direct measuring	5kg	5kg	1.5kg	15kg
	On stable support	2kg	2kg	0.5kg	5kg
	With compact coupling	0.05kg	0.1kg	0.02kg	0.5kg
Min. thickness of test piece	Compact coupling	5mm	5mm	1mm	10mm
	Min.case hardened depth	0.8mm	0.8mm	0.2mm	1.2mm
Size of indentation of spherical test tip					
Hardness 300HV	Indentation diameter	0.54mm	0.54mm	0.38mm	1.03mm
	Indentation depth	24μm	24μm	12μm	53μm
Hardness 600HV	Indentation diameter	0.54mm	0.54mm	0.32mm	0.90mm
	Indentation depth	17μm	17μm	8μm	41μm
Hardness 800HV	Indentation diameter	0.35mm	0.35mm	0.35mm	
	Indentation depth	10μm	10μ	7μ	

Optional Support Rings



Support Rings

No.	Type	Sketch of non-conventional supporting ring	Remarks
1	Z10-15		For testing cylindrical outside surface R10~R15
2	Z14.5-30		For testing cylindrical outside surface R14.5~R30
3	Z25-50		For testing cylindrical outside surface R25~R50
4	HZ11-13		For testing cylindrical inside surface R11~R13
5	HZ12.5-17		For testing cylindrical inside surface R12.5~R17
6	HZ16.5-30		For testing cylindrical inside surface R16.5~R30
7	K10-15		For testing spherical outside surface SR10~SR15
8	K14.5-30		For testing spherical outside surface SR14.5~SR30
9	HK11-13		For testing spherical inside surface SR11~SR13
10	HK12.5-17		For testing spherical inside surface SR12.5~SR17
11	HK16.5-30		For testing spherical inside surface SR16.5~SR30
12	UN		For testing cylindrical outside surface, radius adjustable R10~∞

Distributor:

PCWI International Pty Ltd
 13 Alhambra Avenue
 CARDIFF NSW 2285
 Newcastle - Australia
 Ph: 02 4954 3900
 Fax: 02 4954 3999
 Intl: + 61 2 4954 3900
 www.pcwi.com.au
 sales@pcwi.com.au