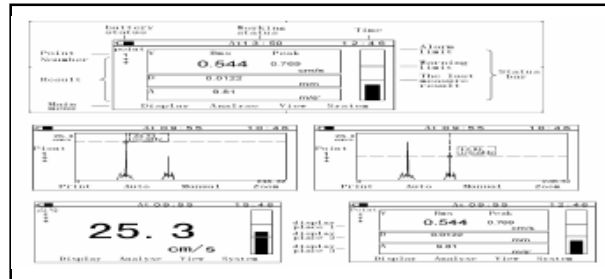


Vibration Tester TV300



- Large measuring range, displacement up to 18.1
- Analyzer of acceleration, velocity, displacement, rotation speed, Frequency
- Three display modes Common mode display any one of peak acceleration, velocity in RMS and displacement in peak-to-peak
- Special mode display all the above options simultaneously
- Spectrum mode display spectrum charts
- Status bar on display with warning and alarm limit
- Memory for 25×62 readings and 25 spectral charts
- RS-232 output for printer or PC (optional software)



Technical specifications

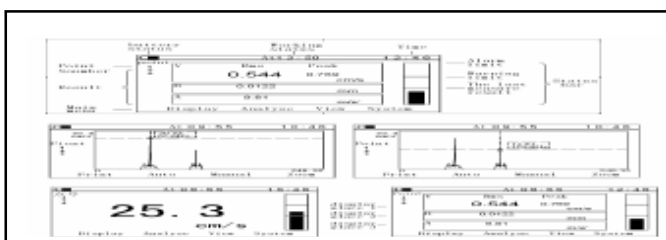
Transducer	Piezoelectric acceleration
Measurement range	Acceleration: 0.1 m/s ² -392m/s ² (peak) Velocity: 0.01cm/s-80cm/s (RMS) Displacement: 0.001mm-18.1mm (peak-peak)
Frequency range	Acceleration: 10-200Hz,10-500Hz,10Hz-1KHz,10Hz-10KHz Velocity: 10Hz-1KHz Displacement: 10Hz-500Hz
Accuracy	±5%
Operating temperature	0 δ ~ 40 δ
Humidity range	±80%
Display	LCD, 320×200 pixels, with LED backlight
Power supply	Li-ion rechargeable batteries charging time 12 hours
Dimensions	171mm×78.5mm×28mm
Weight	230g

Standard delivery

- o Main unit 1
- o Accelerometer probe 1
- o Magnetic base 1
- o Battery charger 1
- o Protective sheath 1
- o TIME certificate 1
- o Instruction manual 1
- o Warranty card 1
- o Carrying case 1

Optional accessories

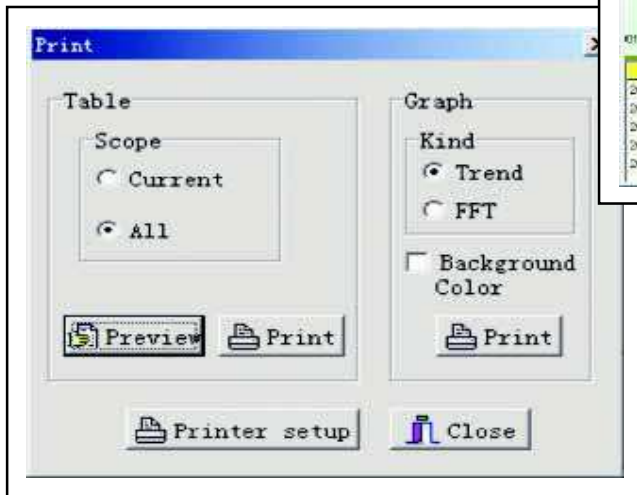
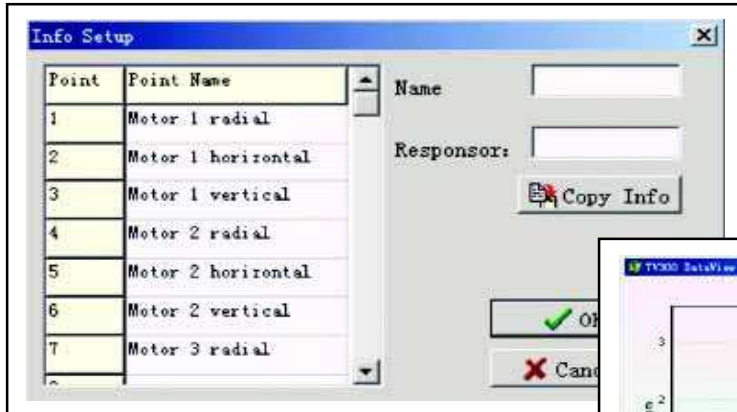
- o Printer TA220S with cable
- o Probe groupware
- o Long needle
- o Dataview with cable



Dataview for TV300

Vibration Tester TV300

Dataview for TV300



TV300 Data List				
Point	Time	Accelerate(g)	Velocity(cm/s)	Displace(mm)
1	2004-5-7 AM 09:34:50	184.0466	10.9249	1.0665
1	2004-5-12 AM 02:41:48	355.5556	37.3333	3.6444
1	2004-5-11 AM 02:41:18	278.7466	27.1948	2.9234
1	2004-5-10 AM 09:44:03	213.4925	22.9114	2.0829
1	2004-5-9 AM 09:01:16	173.1944	17.7222	1.6514
1	2004-5-8 AM 09:52:54	140.0274	13.3083	1.3684
1	2004-5-1 AM 09:38:42	76.4592	7.8237	0.7646
1	2004-5-6 AM 09:09:49	91.1111	9.7778	0.9899
1	2004-5-5 AM 09:38:44	81.6766	8.1677	0.8168
1	2004-5-4 AM 09:25:37	82.085	7.4523	0.8209
1	2004-5-3 AM 09:37:39	74.0278	7.2222	0.7944
1	2004-5-2 AM 09:27:48	74.8971	7.4897	0.749



Distributor: PCWI International Pty Ltd
 13 Alhambra Avenue
 CARDIFF NSW 2285
 Australia
 Ph: 02 4954 3900
 Fax: 02 4954 3999
 Intl: + 61 2 4954 3900
www.pcwi.com.au
sales@pcwi.com.au